

GREEN HOUSE GAS EMISSION AND MONTORING PROCEDURE

| | | |
|--------------------------|---|---|
| 1. Purpose | : | This guideline provides information and instructions on prevention and control of Greenhouse gas emission and its monitoring from the use of electricity and DG set and air conditioning and other gaseous equipment. |
| 2. Scope | : | Applicable to the Greenhouse gas emission and its monitoring from SEPL operations. |
| 3. Ref. Clause | : | 8.1 of ISO 14001:2015 |
| 4. Responsibility | : | It is the responsibility of MR to update and maintain this procedure. It is the responsibility of the respective functional supervisors to ensure that the job carried out conforms to this procedure. |

5. Abbreviations ,Terms and Definitions:


| | |
|-----|--|
| EHS | Environmental, health and safety Management System |
| GHG | Green House Gas |

6. Records:

| S.No. | RECORD | IDENT. NO. | LOCATION |
|-------|--|-------------|----------|
| 1 | GHG monitoring in DG SET-HSD | FMT-EHS-018 | DCC |
| 2 | GHG monitoring in LPG | FMT-EHS-018 | DCC |
| 3 | GHG monitoring in AC & FRIDGE | FMT-EHS-018 | DCC |
| 4 | GHG monitoring in vehicle three -wheeler- elect | FMT-EHS-018 | DCC |
| 5 | GHG monitoring in GOODS VEHICLE- 4 WHEELER - HSD | FMT-EHS-018 | DCC |
| 6 | GHG monitoring in electricity consumption | FMT-EHS-018 | DCC |

7. Amendment Details:

| Rev | Date | Details Of Amendment | Approved By |
|-----|------------|--------------------------------|-------------|
| 0 | 07-07-2023 | New Release | D.P. Singh |
| 01 | 10-08-2023 | Scope-1 updated, Scope-3 added | D.P. Singh |
| | | | |
| | | | |
| | | | |
| | | | |

| | | | |
|--|----------------------|----------------|------------|
|  | EHS PROCEDURE | Document No. | EHS-SOP-29 |
| | | Rev. No. | 01 |
| | | Effective Date | 10-08-2023 |
| | | Page No. | 2 of 5 |
| GREEN HOUSE GAS EMISSION AND MONTORING PROCEDURE | | | |

8. Procedure

8.1 GHG Emission Monitoring and Control:-

A- CO2e EMISSION CALCULATION CRITERIA

Scope-1, Direct impact:-

Machines, equipment's and process at facility level that's generate greenhouse gas emission is considered in scope -1 as like, DG set, AC, Refrigerator and vehicle and other gaseous equipment (LPG).

a-GHG Emission By DG SET: input value (Liter/Month) *0.07434(Emission factor) =Output value in (tCO2e).

b- GHG Emission by LPG: input value (kg/Month)*0.002983 (Emission factor) = Output value in (tCO2e).

c-Our other plant , machinery, equipement and process does not emit GHG.

Scope-2, Indirect impact:-

Electricity consumption is consider in scope -2

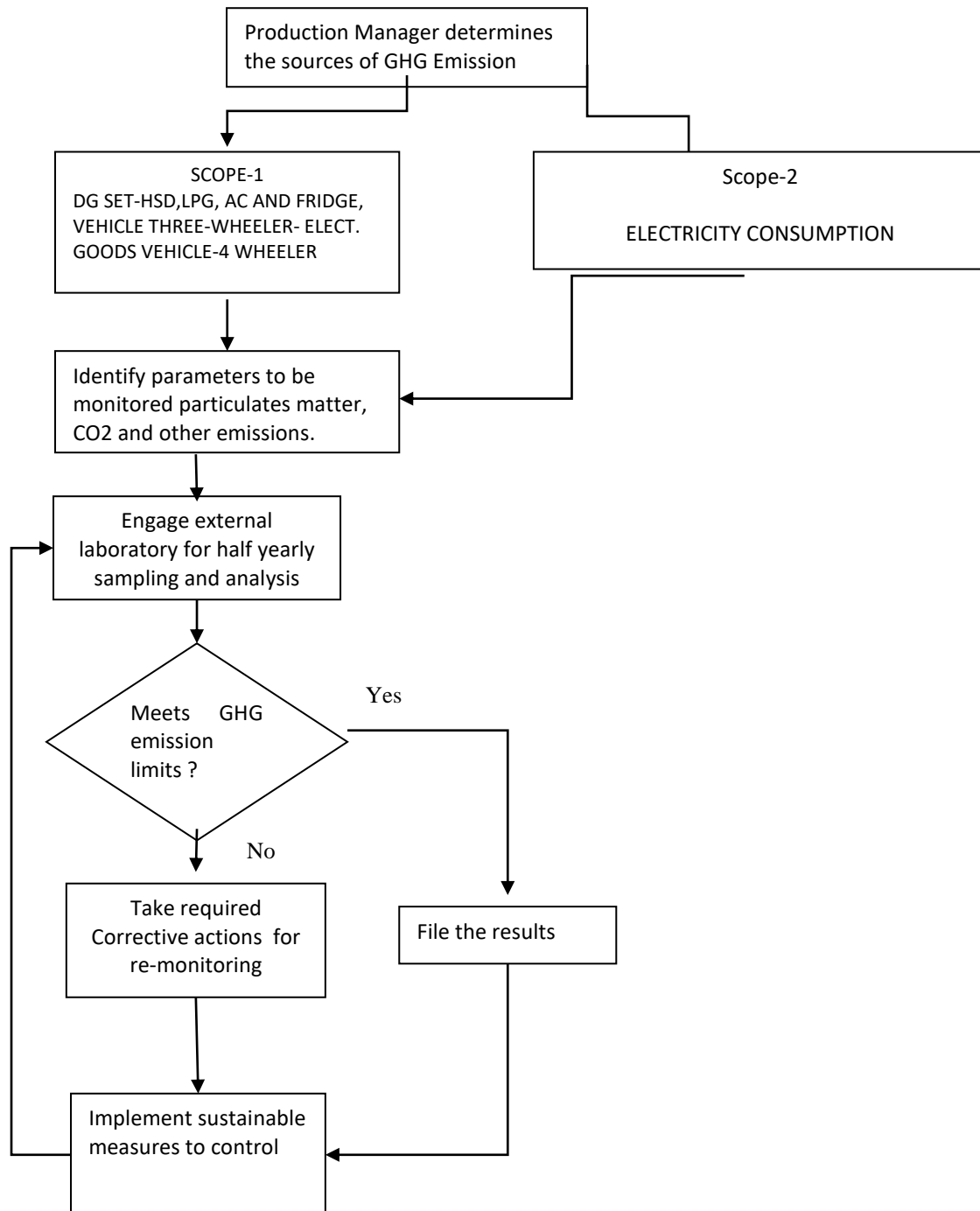
GHG Emission by Electricity consumption: input value (Kwh /Month) * 0.00082 (Emission factor) = Output value in (tCO2e).

Scope-3,We shall ensure our supply chain parteners and service providers to abide the RBA COC and applicable GHG norms . We shall arrange data from our parteners with effect from 01-04-2024.

| Emission Source | Emission Factor |
|-----------------------|-----------------------|
| Electricity (Kwh/Yr.) | 0.85 kg CO2 per kwh |
| Petrol (Liter/Yr.) | 2.29 kg CO2 per Liter |
| Diesel (Liter/Yr.) | 2.68 kg CO2 per Liter |
| LPG (kg/yr.) | 2.98 kg CO2 per kg |
| Wood (kg/Yr.) | 1.8 kg CO2 per kg |

NOTE- Target of GHG Emission reduction 10% of 112.53 (tco2e) for FY 2023-24

GREEN HOUSE GAS EMISSION AND MONTORING PROCEDURE



GREEN HOUSE GAS EMISSION AND MONTORING PROCEDURE
B-HOW TO MONITORING GHG EMISSION-

| | U/M | Jun-23 | May-23 | Apr-23 |
|------------------------------|---|---------------------------------|--------|--------|
| Scope 1 | | | | |
| | | | | |
| | Activity | | | |
| | | | | |
| DG SET-HSD | LTRS | | | |
| | Equivalent Co2-Ton/month(tCo2e) | | | |
| LPG | KGS/MONTH | | | |
| | Equivalent Co2-Ton/month(tCo2e) | | | |
| AC & FRIDGE | Equivalent Co2-Ton/month(tCo2e) | | | |
| Vehicle-Three Wheeler-Elect. | Equivalent Co2-Ton/month(tCo2e) | | | |
| GOODS VEHICLE-4 WHEELER-HSD | Equivalent Co2-Ton/month(tCo2e) | | | |
| | | | | |
| | Scope-1 Total Equivalent Co2-Ton/month(tCo2e) | | | |
| Scope 2 | | | | |
| | | | | |
| | Electricity | KWH | | |
| | | Equivalent Co2-Ton/month(tCo2e) | | |
| | | | | |

GREEN HOUSE GAS EMISSION AND MONTORING PROCEDURE

| | | | | |
|------------------|--|--|--|--|
| | Scope-2 Total Equivalent Co2-Ton/month(tCo2e) | | | |
| | | | | |
| | | | | |
| Production - Qty | Nos/Unit | | | |
| Cost | INR | | | |
| | | | | |
| | G. Total-Equivalent Co2-Ton/month(tCo2e) | | | |
| | Carbon Foot print Per Unit of Product-Equivalent Co2-Ton/month(tCo2e) | | | |
| | Carbon Foot print Per Unit of INR CR. Value-Equivalent Co2-Ton/month(tCo2e) | | | |

We shall monitor, keep, maintain and update GHG emission records as RBA COC and other applicable norms.

C-PUBLIC REPORTING:


We shall report our GHG emission and monitoring through our website

www.seslimited.in

D-ENERGY CONSUMPTION AND COST EFFECTIVE WAYS FOR ENERGY EFFICIENCY:

1-We shall improve energy efficiency –

- By using new manufacturing techniques as acceptable to our customers.
- By switching to lower emitting / clean fuels.
- By replacement of energy efficient machines.
- By replacement of old AC and Fridge to new efficient star rating HVAC.
- By control and practice to switch of lights, AC, computers and other equipment's when not in use or lunch/tea breaks.
- By using/replacement LED bulbs, solar lights and other smart energy efficient luminaries.
- We shall install energy saving devices (Power analyzer) .
- We shall take expert opinion before purchase of any equipment having compressor, chiller or heating process .
- Maintaining efficient housekeeping .
- Using natural lights at optimum level at the places where it can be replaced by installed lights.

| | | | |
|--|----------------------|----------------|------------|
|  | EHS PROCEDURE | Document No. | EHS-SOP-29 |
| | | Rev. No. | 01 |
| | | Effective Date | 10-08-2023 |
| | | Page No. | 6 of 5 |
| GREEN HOUSE GAS EMISSION AND MONTORING PROCEDURE | | | |

- We shall switch to green energy in phased manner.
- We shall avoid mass market , unnecessary traveling and use car/vehicle pooling for official travel and goods delivery . For meetings we shall avoid personal meetings and shall be replaced by electronic/hybrid meetings .
- We shall refuse to accept single use plastics.
- We shall monitor carbon capture, utilization and unnecessary storages with effect from FY 2024-25.
- We shall reduce meet / dairy consumption at our facility with consent of employee and visitors.
- We shall do audit for GHG emission annually.
- We shall increase plantation and work towards zero discharge.